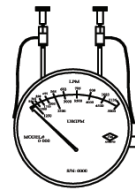


# GVI FIRE PUMP METERS - DIMENSIONAL DATA

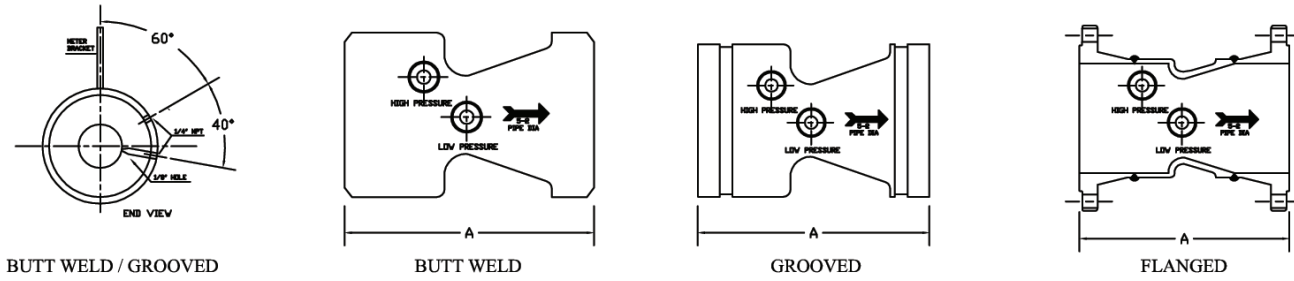
MACHINED or CAST CARBON STEEL "WCB"

CONSTRUCTION & SPECIFICATIONS	
MATERIALS:	MACHINED 1018 / 1026 CARBON STEEL or CAST CARBON STEEL "WCB"
VALVES:	1/4" BRASS BALL
FLANGE OPT:	150# ANSI B 16.5 300# ANSI B 16.5
ID TAG:	POLYCARBONATE

METER DATA	
CONSTRUCTION:	ALUMINUM BODY
OPERATION:	DIAPHRAGM (BUNA CONVOLUTED)
ACCURACY:	+ 2% FULL SCALE
TEMPERATURE:	180°F / 80°C
PRESSURE:	500 PSIG - 3450 KPA
APPROX. WEIGHT:	3.75 LBS (1.7 KGS)
4" DIAL STANDARD - 6" DIAL AVAILABLE	



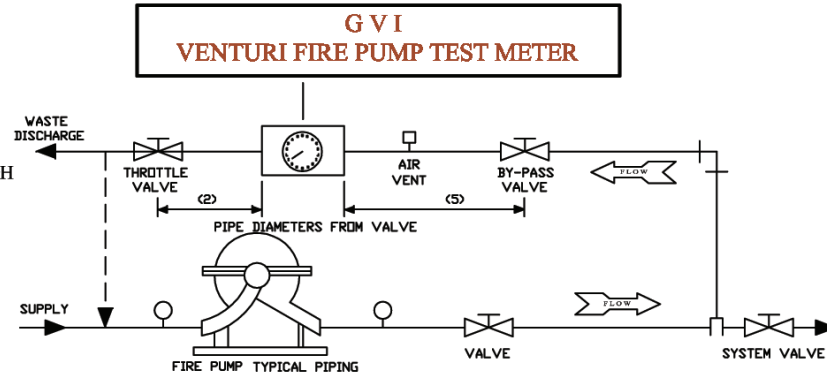
MATERIALS AVAILABLE: STAINLESS STEEL, BRASS, ALUMINUM, MONEL, VARIOUS PLASTICS, EPOXY COATED, AND MANY OTHERS. PLEASE CONSULT FACTORY.



SIZE	BUTT WELD & GROOVED		150 # FLANGED		300# FLANGED	
	"A" DIM	APPROX. WEIGHT	"A" DIM	APPROX. WEIGHT	"A" DIM	APPROX. WEIGHT
1-1/4"	4.875	2 lbs.	---	---	---	---
2"	5.000	3.5 lbs.	---	---	---	---
2-1/2"	4.000	5 lbs.	9.250	21 lbs.	10.000	28 lbs.
3"	4.000	6 lbs.	9.375	30 lbs.	10.250	36 lbs.
3-1/2"	---	---	---	---	---	---
4"	5.375	10 lbs.	11.375	40 lbs.	12.125	60 lbs.
5"	6.000	20 lbs.	13.000	58 lbs.	13.750	84 lbs.
6"	7.000	22 lbs.	14.000	70 lbs.	14.750	106 lbs.
8"	7.250	31 lbs.	15.250	93 lbs.	16.000	181 lbs.
10"	8.000	45 lbs.	16.000	149 lbs.	17.250	227 lbs.
12"	12.000	78 lbs.	21.000	238 lbs.	22.250	358 lbs.
14"	14.000	85 lbs.	---	---	---	---
16"	28.000	166 lbs.	---	---	---	---

## OPERATING INSTRUCTIONS

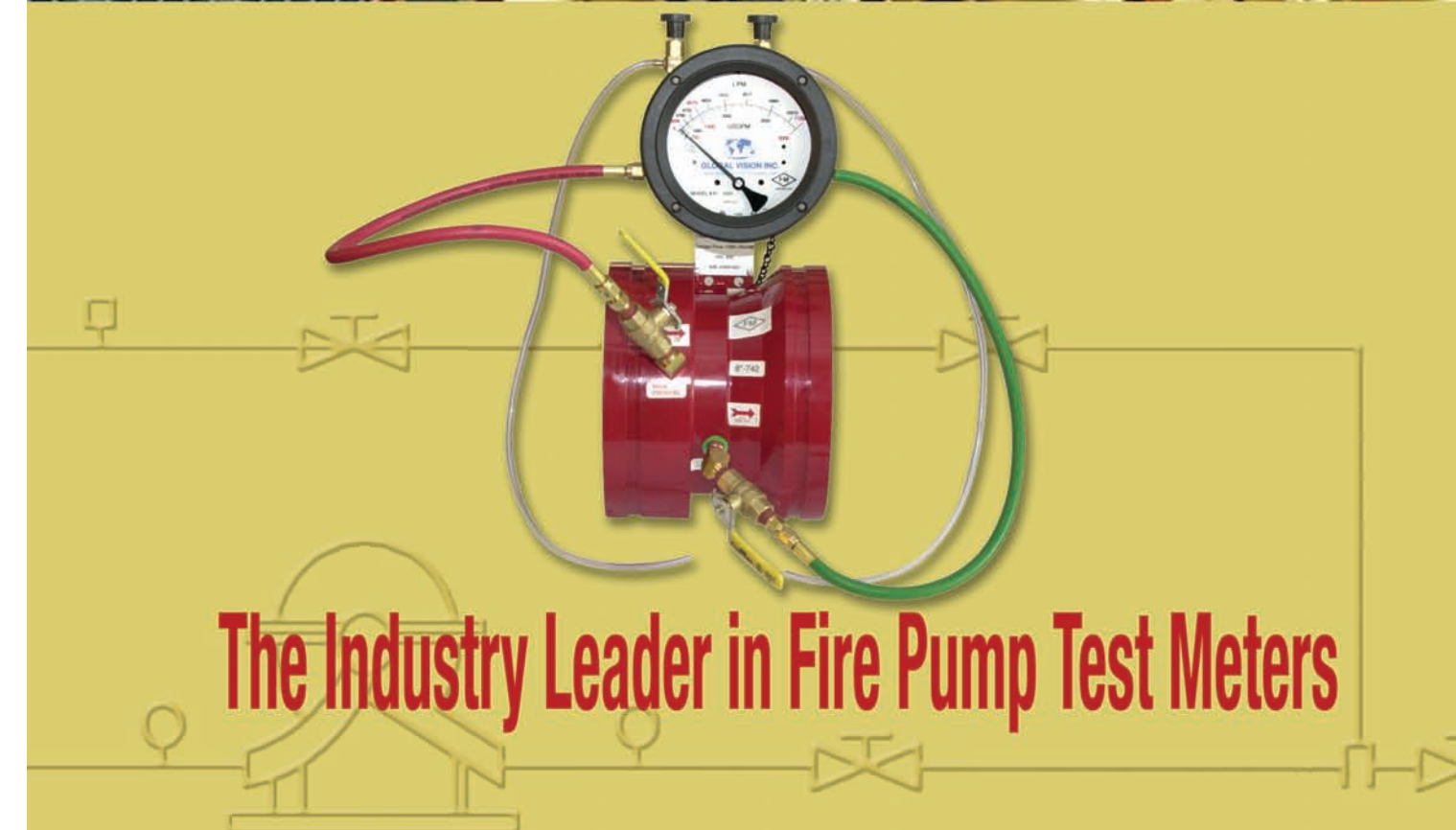
- CLOSE SYSTEM VALVE.
- OPEN SYSTEM BY-PASS VALVE AND THROTTLE VALVE.
- PURGE METER LOCATED ON VENTURI AS FOLLOWS:
  - OPEN SHUT-OFF VALVES & VENT VALVES.
  - WHEN A STEADY STREAM OF WATER IS PASSING THROUGH EACH PLASTIC HOSE, THE METER IS PURGED OF AIR.
  - CLOSE VENT VALVE AFTER PURGING.
- START FIRE PUMP, READ METER IN GPM / LPM
- REFER TO PUMP GPM / LPM REQUIREMENT AND ADJUST THROTTLE VALVE FOR THIS REQUIREMENT.
- AFTER TEST OPEN SYSTEM VALVE AND CLOSE SYSTEM BY-PASS AND THROTTLE VALVES.



**GLOBAL VISION INC.**  
www.gviflow.com

763-391-0990 • fax 763-391-7668  
8800 Jefferson Highway - Osseo, MN 55369

8800 JEFFERSON HIGHWAY - OSSEO, MN 55369 USA  
PHONE (763) 391-0990 FAX (763) 391-7668 EMAIL: info@gviflow.com



**GLOBAL VISION INC.**  
www.gviflow.com



Global Vision's  
Venturi Fire Pump  
Test Meter  
Technology,  
Machining and  
Manufacturing processes  
meet all top  
quality standards



**Venturi Fire Pump Test Meter**

**VENTURI:** 1018 or 1026  
Solid Carbon Steel (machined)  
Carbon Steel Thick Wall Pipe  
and/or Tube (machined)  
Material Certs Available  
Powder Coating "Red" or  
Cast Carbon Steel

**METERS:** ALUMINUM 4" Dial, 1/4 MNPT  
Connections 304SS Case with  
Rubber Ring, Glass Window  
buna-n Seal

**BALL VALVES:** Brass (CA360)

**BRASS FITTINGS:** Brass (CA360)

**HOSES:** "Goodyear" Rubber Hose  
Brass (CA360) Fittings  
Rating: 750 psi working Pressure

**5 Year Limited Warranty**

For more information on standards or product call:



**GLOBAL VISION INC.**  
www.gviflow.com  
763-391-0990 • fax 763-391-7668  
8800 Jefferson Highway - Osseo, MN 55369

**VENTURI FIRE PUMP FLOW SYSTEM**

Line Size	Pump GPM	Meter Range Min. & Max. GPM	Meter Range Min. & Max. LPM	Model Number Grooved	Model Number Butt Weld	Model Number 150# Flanged	Model Number <Threaded> *300# FLANGED*
**1-1/4"	25	12.5 - 50	47 - 189	* 1.25"-25-G	1.25"-25-B	* 1.25"-25-F	1.25"-25-T
**2"	50	25 - 100	95 - 379	* 2"-50-G	2"-50-B	* 2"-50-F	2"-50-T
**2-1/2"	100	50 - 200	189 - 757	2.5"-100-G	2.5"-100-B	2.5"-100-F	*2.5"-100-F3
3"	150	75 - 300	284 - 1136	3"-150-G	3"-150-B	3"-150-F	*3"-150-F3
3"	200	100 - 400	379 - 1514	3"-200-G	3"-200-B	3"-200-F	*3"-150-F3
4"	250	125 - 500	473 - 1893	4"-250-G	4"-250-B	4"-250-F	*4"-250-F3
4"	300	150 - 600	568 - 2271	4"-300-G	4"-300-B	4"-300-F	*4"-300-F3
4"	400	200 - 800	757 - 3028	4"-400-G	4"-400-B	4"-400-F	*4"-400-F3
4"	450	225 - 900	852 - 3407	4"-450-G	4"-450-B	4"-450-F	*4"-450-F3
5"	450	225 - 900	852 - 3407	5"-450-G	5"-450-B	5"-450-F	*5"-450-F3
5"	500	250 - 1000	946 - 3785	5"-500-G	5"-500-B	5"-500-F	*5"-500-F3
5"	750	375 - 1500	1420 - 5678	5"-750-G	5"-750-B	5"-750-F	*5"-750-F3
6"	500	250 - 1000	946 - 3785	6"-500-G	6"-500-B	6"-500-F	6"-500-F3
6"	750	375 - 1500	1420 - 5678	6"-750-G	6"-750-B	6"-750-F	6"-750-F3
6"	1000	500 - 2000	1893 - 7570	6"-1000-G	6"-1000-B	6"-1000-F	6"-1000-F3
6"	1250	625 - 2500	2366 - 9462	6"-1250-G	6"-1250-B	6"-1250-F	6"-1250-F3

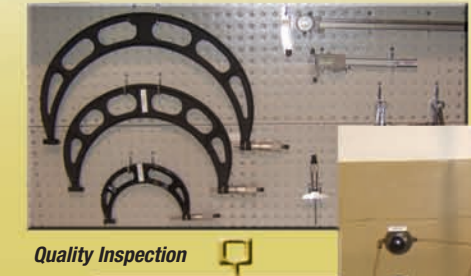
\* Denotes Non-Stock Item, Please check with factory for availability  
\*\* Sizes 1-1/4", 2", & 14" are Not FM Approved per Factory Mutual\*\*

**VENTURI FIRE PUMP FLOW SYSTEM**

Line Size	Pump GPM	Meter Range Min. & Max. GPM	Meter Range Min. & Max. LPM	Model Number Grooved	Model Number Butt Weld	Model Number Flanged
8"	1000	500 - 2000	1893 - 7570	8"-1000-G	8"-1000-B	8"-1000-F
8"	1250	625 - 2500	2366 - 9462	8"-1250-G	8"-1250-B	8"-1250-F
8"	1500	750 - 3000	2839 - 11356	8"-1500-G	8"-1500-B	8"-1500-F
8"	2000	1000 - 4000	3785 - 15142	8"-2000-G	8"-2000-B	8"-2000-F
8"	2500	1250 - 5000	4731 - 18925	8"-2500-G	8"-2500-B	8"-2500-F
8"	3000	1500 - 6000	5678 - 22712	8"-3000-G	8"-3000-B	8"-3000-F
10"	1500	750 - 3000	2839 - 11356	10"-1500-G	10"-1500-B	10"-1500-F
10"	2000	1000 - 4000	3785 - 15142	10"-2000-G	10"-2000-B	10"-2000-F
10"	2500	1250 - 5000	4731 - 18925	10"-2500-G	10"-2500-B	10"-2500-F
10"	3000	1500 - 6000	5678 - 22712	10"-3000-G	10"-3000-B	10"-3000-F
10"	3500	1750 - 7000	6624 - 26495	10"-3500-G	10"-3500-B	10"-3500-F
10"	4000	2000 - 8000	7570 - 30283	10"-4000-G	10"-4000-B	10"-4000-F
10"	4500	2250 - 9000	8518 - 34068	10"-4500-G	10"-4500-B	10"-4500-F
12"	2500	1250 - 5000	4731 - 18925	* 12"-2500-G	* 12"-2500-B	* 12"-2500-F
12"	3000	1500 - 6000	5678 - 22712	* 12"-3000-G	* 12"-3000-B	* 12"-3000-F
12"	3500	1750 - 7000	6624 - 26495	* 12"-3500-G	* 12"-3500-B	* 12"-3500-F
12"	4000	2000 - 8000	7570 - 30283	* 12"-4000-G	* 12"-4000-B	* 12"-4000-F
12"	4500	2250 - 9000	8518 - 34068	* 12"-4500-G	* 12"-4500-B	* 12"-4500-F
12"	5000	2500 - 10000	9464 - 37854	12"-5000-G	12"-5000-B	12"-5000-F

\* Denotes Non-Stock Item, Please check with factory for availability  
\*\* Sizes 1-1/4", 2", & 14" are Not FM Approved per Factory Mutual\*\*

Global Vision is the leader in Flow Technology. Our Mission is to maintain this reputation by providing the highest level of quality and customer satisfaction. We are FM approved ... and our equipment is ISO 17025 certified.



Quality Inspection



Meter Testing

OEM names on meter faces and venturis



VENTURI FIRE PUMP



Large Inventory/Immediate Shipping

Global Vision your first choice for all your flow needs:

- First rate customer service
- On-time deliveries
- Outstanding pricing

