

Double Door Check Valve 175PSI

FIG · F0411-175

Specifications

- The extremely short face to face dimension and compact design of this valve allow installation and service in tight spaces.
- Spring assisted for better dynamic behaviour.
- Soft seated for perfect tightness even at low differential pressure.
- Flanges to ANSI B16. 1 Class125.
- UL Listed.
- GOST Certification.

Working Pressure

- 175PSI.

Working Temperature

- -10°C to 82°C.

Corrosion Protection

- Spray-painted or Fusion Bonded Epoxy Coated Interior and Exterior to AWWA C550 Standard.

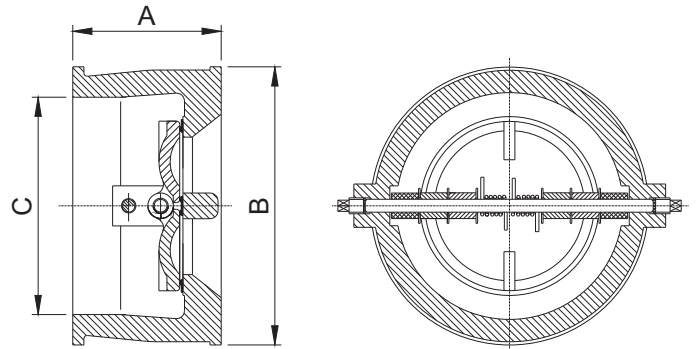
Notes:

Design and material are subject to change without notice.

Material Specifications

Component	Material
Body	Cast Iron ASTM A126 Class B
Stop Pin	Stainless Steel AISI 416
Hinge Pin	Stainless Steel AISI 416
Seat	EPDM
Pin Retainer	Stainless Steel AISI 416
Gasket	PTFE
Washer	PTFE
Spacer	PTFE
Disc	Stainless Steel ASTM CF8
Spring	Stainless Steel AISI 304
Lifting Hook	Carbon Steel (Not Shown, only for 8", 10" & 12")

Schematic



Dimensions (mm / inch)

Size	100mm/4"		150mm/6"		200mm/8"		250mm/10"		300mm/12"	
	mm	inch	mm	inch	mm	inch	mm	inch	mm	inch
A	93	3-11/16	105	4-1/8	121	4-3/4	154	6-1/16	187	7-3/8
B	172	6-3/4	220	8-11/16	280	11	340	13-3/8	410	16-1/8
C	136	5-3/8	178	7	230	9-1/16	285	11-1/4	338	13-5/16
Weight (kg)	8.4		13.5		23		42		68	

The designs, materials and specifications shown are subject to change without notice due to the continuous development of our products.