



300 psi
3", 4", 6", 8" &
150mm MODEL H-2
ALARM CHECK VALVE

DESCRIPTION AND OPERATION

The Globe Model H-2 High Pressure Alarm Check Valves are used in wet pipe fire sprinkler systems. They primarily serve a dual purpose in that they prevent a reverse flow of water through their bodies (non-return) and also provide for the use of a hydraulic fire alarm which is not dependent upon an electrical power supply for its operation. Through the use of a hydraulic retard chamber a time delay is provided to eliminate potential false alarms caused by fluctuating water supply pressures. Where constant pressure water supplies are used the retard chamber (time delay) is not necessary. By incorporating the use of electrical pressure switches, other supplemental alarms, annunciators etc. may also be used.

A unique feature found on the Globe Model H-2 High Pressure 3", 4", 6" and 150mm Alarm Check Valves is the clapper being hinged to the handhole cover for extreme ease of removal for inspection and service.

Globe 3", 4", 6" and 150mm Model H-2 High Pressure Alarm Check Valves may be installed in both vertical and horizontal positions and trim can be provided for both variable and constant water supply pressures in either of these positions. Globe 8" Model H-2 High Pressure Alarm Check Valve must be installed in the vertical position and trim can be provided for both variable and constant water supply pressures.

The body and cover of the High Pressure Alarm Check Valve is constructed of high tensile strength ductile iron.

All interior operating parts are machined from highly corrosive-resistant alloys, each having high strength and good wear resistance.

Rubber parts are of selective materials which have good abrasive resistance and long life expectancy in terms of resiliency.



MODEL H-2
GROOVE/GROOVE

APPROVALS

- cULus Listed
- FM Approved
- LPCB
- CE

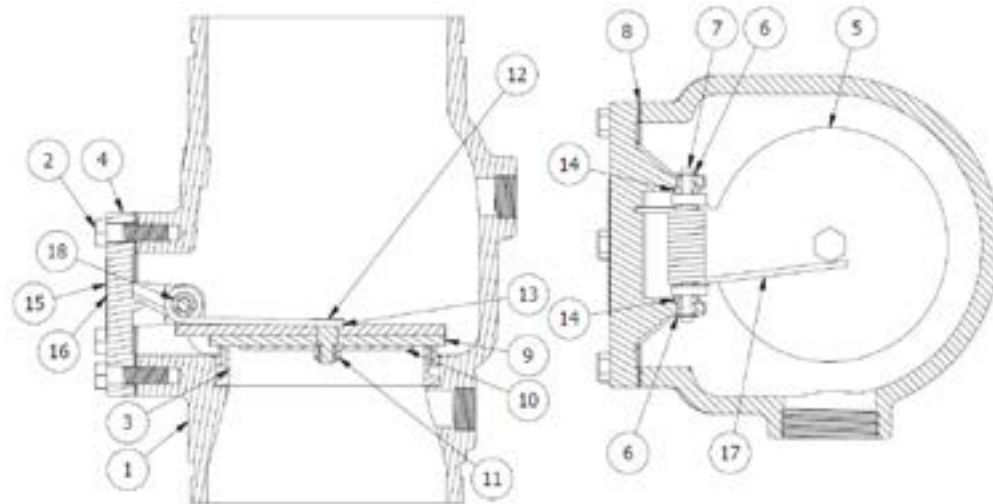
TECHNICAL DATA

- Water Working Pressure Rating - 300 psi (20.7 bars)
- Factory tested hydrostatically to 600 psi (41.4 bars).
- Equivalent feet of pipe: 3" Valve = 12.2 feet,
 4" Valve = 9.7 feet 6" Valve = 17 feet, 8" Valve = 21 feet

PHYSICAL DATA	SIZE				
	H-2				
	3" [80mm] ANSI/DIN	4" [100mm] ANSI/DIN	6" ANSI	150mm DIN	8" [200mm] ANSI / DIN
OVERALL LENGTH	10"	10"	12"	12"	15"
Weight of Valve Complete with Vertical Variable Pressure Trimmings	20 lbs. 57 lbs.	22 lbs. 69 lbs.	46 lbs. 95 lbs.	46 lbs. 95 lbs.	106 lbs. 157 lbs.

300 psi
3", 4", 6", 8" &
150mm MODEL H-2
ALARM CHECK VALVE

MODEL H-2
CROSS SECTIONS



FRONT VIEW

TOP VIEW

ITEM	DESCRIPTION	MAT'L	3" [80mm] P/N	4" [100mm] P/N	6" / 150mm P/N	8" [200mm] P/N	ITEM	DESCRIPTION	MAT'L	3" [80mm] P/N	4" [100mm] P/N	6" / 150mm P/N	8" [200mm] P/N
1	"H-2" Body	Ductile Iron	323827-HP	323552-HP	323666-HP/ 323666-D-HP	323858-HP	10	Disc Retainer	Stainless	323816	323512	323572	323843
2	Cover Bolt	Steel	323408	323509	323569	323839	11	Lock Nut	Stainless	323514	323514	323514	-----
3	Seat Ring	Bronze	323809	323504	323564	323837	12	Disc Retainer Bolt	Stainless	323817	323513	323573	323838
4	Cover	Ductile Iron	323805-HP	323507-HP	323567-HP	323835-HP	13	Sealing Washer	Hard Fiber	323515	323515	323515	-----
5	*Clapper	Stainless	323814	323510	323507	323841	14	Hinge Pin Bushings (2)	Bronze	323819	323518	323518	323846
6	Retaining Ring	Stainless	323527	323517	323517	-----	15	Name Plate	Aluminum	323480	323480	323480	323847
7	Hinge Pin	Stainless	323818	323516	323516	323845	16	Drive Screws (2)	Stainless	323520	323520	323520	323420
8	**Cover Gasket	Vellumoid	323810	323508	323568	323833	17	Torsion Spring	Stainless	323528	323528	323565	-----
9	Clapper Facing Disc	EPDM	323815	323511	323571	323842	18	Spring Bushing	Brass	-----	-----	323579	-----

Refer to Globe's Alarm Check Valve Installation and Maintenance Guide (Bulletin A.C.V.I.M.) for trim set-up, installation instructions, and maintenance.

*8 Inch Clapper material is Bronze

**8 Inch Cover Gasket material is Rubber

ORDERING INFORMATION

SPECIFY

- Quantity • Model Number • Size • Pressure Rating
- Factory Trimmed and Leak Tested Hydrostatically or Loose Trim for Customer Installation.

GLOBE® PRODUCT WARRANTY

Globe agrees to repair or replace any of its own manufactured products found to be defective in material or workmanship for a period of one year from date of shipment.

For specific details of our warranty please refer to Price List Terms and Conditions of Sale (Our Price List).

