

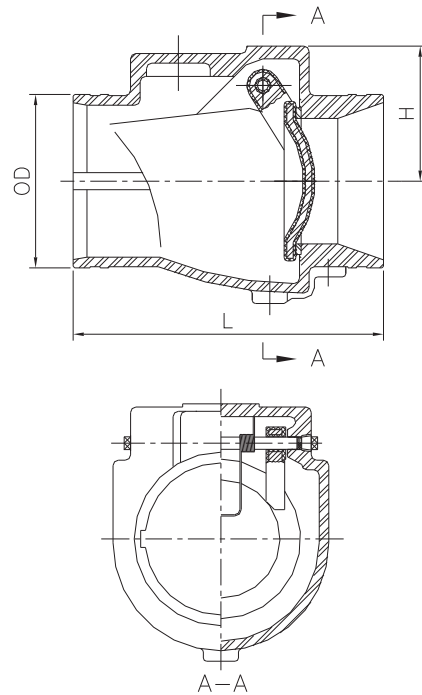
SWING CHECK VALVE GROOVED ENDS 300PSI FIG · F0322–300

Specifications

- Full waterway design
- Seating type is resilient material to bronze seat construction
- Two test plugs included – installed on one side of valve body
- Grooved Ends to AWWA C606 Standard or Metric Dimensions
- UL Listed and FM Approved
- Working pressure:
300PSI
200PSI and 250PSI available on request
- Working temperature
42° F – 180° F
- Corrosion protection:
Fusion Bonded Epoxy Coated Interior and Exterior to AWWA C550 Standard
- Installation:
May be installed horizontally or vertically, for vertical installations, the flow must be in upward direction

Note:
Design and material are subject to change without notice.

Schematic



Material Specifications

| Part Name | Material | ASTM Spec. |
|-----------|----------------------------|---------------|
| Body | Ductile Iron | A536 65-45-12 |
| Seat Ring | Bronze | B62 C83600 |
| Disc | DI and Rubber Encapsulated | DI+EPDM |
| Spindle | Stainless Steel | AISI 316 |
| Spring | Stainless Steel | AISI 304 |
| Plug | Stainless Steel | AISI 304 |
| Washer | Rubber | EPDM |

Dimensions (mm/inch)

| Size | 2.5" | | 3" | | 4" | | 5" | | 6" | | 8" | | 10" | | 12" | |
|------|------|---------|------|--------|-------|-------|-------|--------|-------|--------|-------|--------|-------|---------|-------|--------|
| | mm | inch | mm | inch | mm | inch | mm | inch | mm | inch | mm | inch | mm | inch | mm | inch |
| OD | 73.0 | 2-7/8 | 88.9 | 3-1/2 | 114.3 | 4-1/2 | 139.7 | 5-1/2 | 165.1 | 6-1/2 | 219.1 | 8-5/8 | 273.0 | 10-3/4 | 323.9 | 12-3/4 |
| | 76.1 | 3 | | | | | 141.3 | 6-9/16 | 168.3 | 6-5/8 | | | | | | |
| L | 203 | 8 | 213 | 8-3/8 | 245 | 9-5/8 | 267 | 10-1/2 | 292 | 11-1/2 | 356 | 14 | 432 | 17 | 495 | 19-1/2 |
| H | 74.5 | 2-15/16 | 78 | 3-1/16 | 102 | 4 | 112 | 4-7/16 | 133.5 | 5-1/4 | 160 | 6-5/16 | 195 | 7-11/16 | 215 | 8-1/2 |